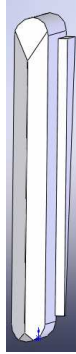




## AUTOMATIC EXPULSION CHUCK CHARACTERISTICS

- Can be Taylor made to your particular requirements, from 4" to 16".
- It can work with two different types of lugs.



Standard Lug



Totalgrip Lug

- The gripping force applied on the core is constant during the work. You can use it for winding or unwinding applications.
- It reduces the changing times of the reels thanks to the automatic expulsion.
- Using this type of chuck, we will improve the operators working place, avoiding extra physical efforts and allowing them to save time that can be use in another tasks.
- It will increase the productivity.
- Flanges can be adapted to any roll-stand.

